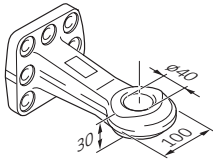
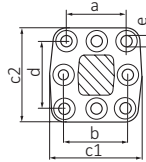


Zugösen • Drawbar eyes

Form C/D mit Flansch DIN 74054 • Shape C/D with flange DIN 74054



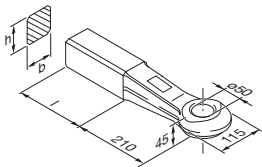
	h x b (mm)	D (kN)	Dc (kN)	S (kg)	V (kN)	(kg)	ECE	ROE
ROE57243	–	130	100	1000	35,8	8,8	E1 55R-01 0046	ROE70951
ROE57349	–	130	100	1000	35,8	8,8	E1 55R-01 0046	ROE70950



		a (mm)	b (mm)	c1 (mm)	c2 (mm)	d (mm)	e (mm)
ROE57243		100	110	154	154	110	17
ROE57349		100	–	154	154	110	17

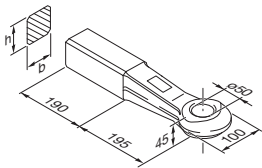
50 mm

Form A mit Schweißende DIN 74053 • Shape A for welding DIN 74053



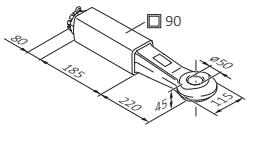
	h x b (mm)	D (kN)	Dc (kN)	S (kg)	V (kN)	(kg)	ECE
ROE57272	65 x 50	190	90	1000	30	10,71	E1 55R-01 2335
ROE57427	65 x 50	190	90	1000	30	10,71	E1 55R-02 2335

Schwerlastzugöse mit Schweißende • Heavy duty towing eye for welding



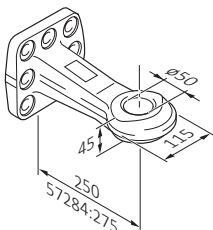
	h x b (mm)	D (kN)	Dc (kN)	S (kg)	V (kN)	(kg)	ECE
ROE57005	80 x 75	314	–	–	–	13,46	E1 55R-01 2146

Form B mit Schraubende DIN 74053 • Shape B for bolting DIN 74053

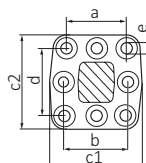


	h x b (mm)	D (kN)	Dc (kN)	S (kg)	V (kN)	(kg)	ECE
ROE57321	90 x 90	190	90	1000	25	19,83	E1 55R-01 2337
ROE57431	90 x 90	190	90	1000	25	19,83	E1 55R-02 2337

Form C/D mit Flansch DIN 74053 • Shape C/D with flange DIN 74053



	h x b (mm)	D (kN)	Dc (kN)	S (kg)	V (kN)	(kg)	ECE	ROE
ROE57244	–	190	135/113	1000/2500	72,5/43,2	11,5	E1 55R-01 0045	ROE70950
ROE57423	–	190	135/113	1000/2500	72,5/43,2	11,5	E1 55R-02 0045	ROE70950
ROE57284	–	250	135/113	1000/2500	90/43,2	17,4	E1 55R-01 0162	ROE70965



		a (mm)	b (mm)	c1 (mm)	c2 (mm)	d (mm)	e (mm)
ROE57244		100	110	154	154	110	17
ROE57284		130	130	190	180	130	21
ROE57423		100	110	154	154	110	17